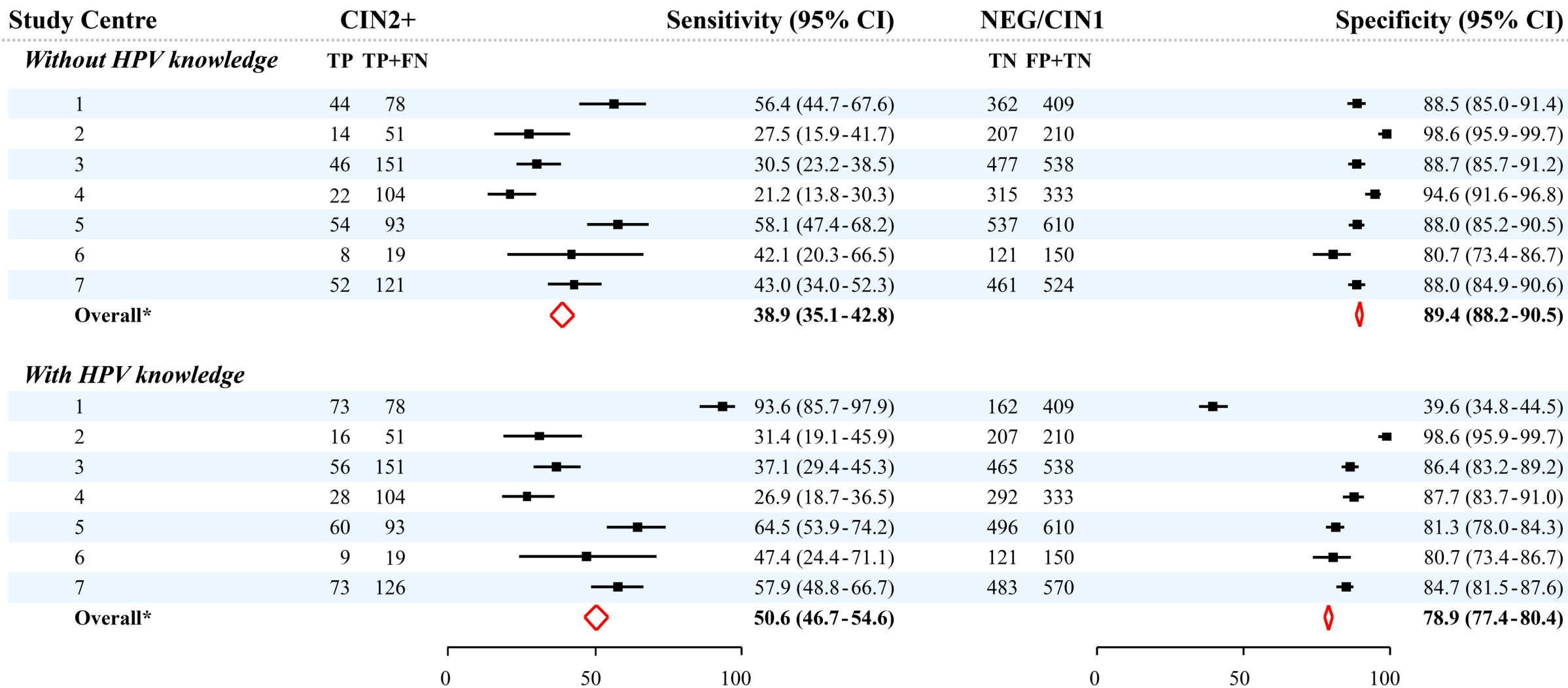


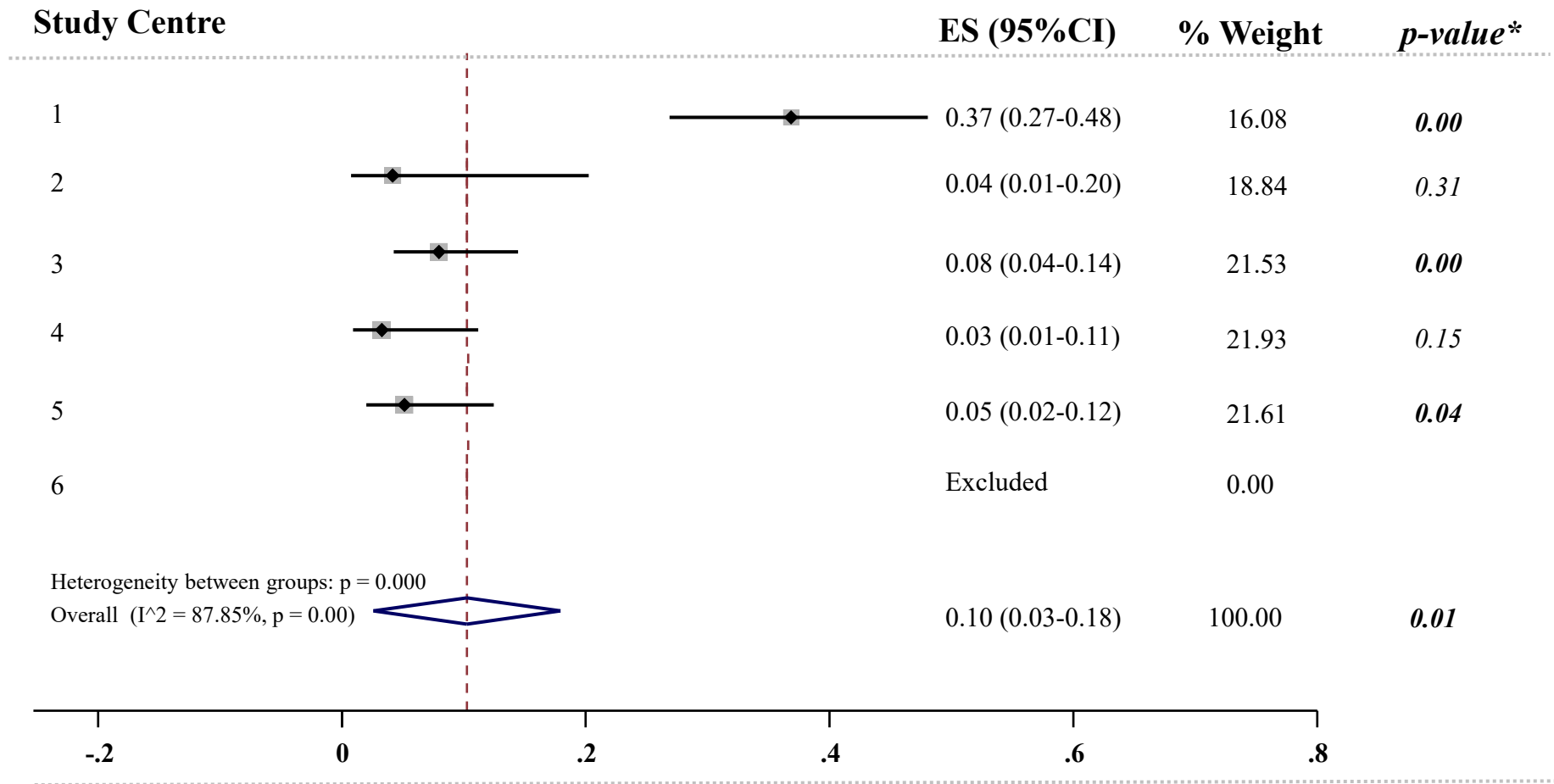
<b>Characteristics among women</b>	<b>Total n = 4,087 (%)</b>
<i>Age, years</i>	
30-39	1,956 (47.9)
40-49	1,088 (26.6)
50-64	1,043 (25.5)
<i>Smoking</i>	
Yes	1,211 (29.6)
No	2,837 (69.4)
Missing information	39 (1.0)
<i>Number of sexual partners</i>	
1	690 (16.9)
2-3	1,794 (43.9)
4-5	846 (20.7)
≥6	685 (16.8)
Missing information	72 (1.8)
<i>Last pap smear done</i>	
Less than 2 years ago	2,288 (56.0)
2-5 years ago	1,225 (30.0)
>5 years ago	564 (13.8)
Missing information	10 (0.2)
<i>Study centres</i>	
Centre 1	487 (11.9)
Centre 2	261 (6.4)
Centre 3	689 (16.9)
Centre 4	437 (10.7)
Centre 5	703 (17.2)
Centre 6	169 (4.1)
Centre 7	1,341 (32.8)

**Supplementary Table 1.** Population characteristics among included women.



\* Fixed-effects model

**Supplementary Figure 1.** Forest plots for the performance of cytology without and with knowledge of HPV positivity for CIN2+ detection for seven study centres.



**Supplementary Figure 2.** Forest plots for the proportions (differences in sensitivity of cytology with and without knowledge of HPV positivity for CIN3+ detection) for six study centres